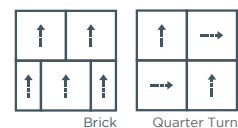
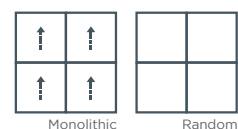


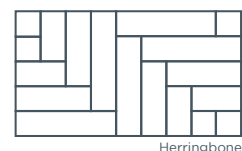
technical specifications

Product Name	Balance Echo
Product Description	Low Level Loop
Pile Yarn Description	100% Solution Dyed Nylon (Polyamide-PA)
Tile Dimensions	50 cm x 50 cm, 25 cm x 100 cm
Pile Yarn Weight	550g/m ² +/-10%
Total Weight	4300g/m ² +/-10%
Pile Height	4.5mm +/-10%
Total Thickness	7.0mm +/-10%
Gauge/ends per 10cm	1/10 th gauge 45 stitches
Tufts per m ² / Pile Density	176,850/m ² +/-10%
Backing Description	Accummen™, 75% recycled
Wear Classification	BS EN 1307 Heavy Commercial Use Class 33
Luxury Rating Class	LC2
Flammability	Euroclass Bfl-s1
Thermal Resistance	Tog Rating 0.39; ISO 8302: 0.04 m ² K/W
Castor Chair Rating	BS EN 985 Pass - suitable for continuous use
Hexapod	BS ISO 10361: Method B:2000 3 to 4
Static Loading	BS 4939: 1987 (2003) Recovery >80% (24hrs)
Dynamic Loading	BS ISO 2094: 1999 (2005) Loss <20% (1000 impacts)
Body Voltage Test	BS ISO 6356:2000 <2kV
Colour Fastness To Light	BS EN ISO 105 - B02 Minimum Grade 6
Colour Fastness To Shampoo	BS 1006:UK-TB: 1990 Minimum Grade 4-5
Sound Absorption Coefficient	BS EN 354:2003
Reduction in Impact Noise	BS EN 140-8: Part 8: 1998 24dB
Reduction in Impact Noise at 1000Hz	BS EN 140-8 Part 8: 1998 39dB
Number Of Tiles/Planks Per Box	20 (5m ²)

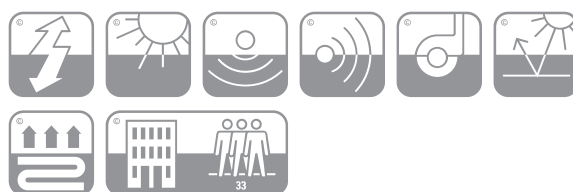
For best results carpet tiles installation we recommend*



For best carpet planks installation we recommend*



*All tiles within this design are unique and any linear aspects may not match from one tile to the next



This floor covering was made with renewable electricity



Environmental Profiles Scheme Certificate Number ENP353



Certificate Number FM01440 BS EN ISO 9001:2015



Statement on level of emission of volatile substances in indoor air posing a toxic threat during inhaling – on a scale from A+ (very low-emission) to C (high-emission)



The Building Information Foundation, Finland. Certified building materials with low emission class M1

environmental information

- Burmatex products achieve either A or A+ across all the BREEAM defined building applications For specific rating, please refer to www.breeam.co.uk
- Burmatex products qualify for SKA as they achieve one or more requested criteria
- All Burmatex carpet/carpet tile ranges are made at its single UK manufacturing site
- Wherever possible, raw materials including yarn/fibre are sourced locally i.e. within 20 miles
- Over 75% of Burmatex Accummen™ backing comes from recycled materials
- Continuous assessment and improvement of manufacturing process to minimise use of raw materials/power
- All manufacturing waste is recycled and all electricity used is from renewable resources
- All Burmatex products are heavy contract with a 10 year guarantee for maximum useful life
- Certified, Class A+: very-low volatile organic compound (VOC) Emission

LEED® v4 - Burmatex products can contribute towards satisfying the following credits for LEED v4: NC-v4/CI-v4 MRC2/MRC3 (Building product disclosure and optimization - environmental product declarations), MRC3/MRC4 (Building product disclosure and optimization - sourcing of raw materials), EQc1 (Enhanced indoor air quality strategies), EQc2 (Low-emitting materials), EQc6 (Interior lighting - Option 2. Lighting quality (E - H)) and EQc9 (Acoustic Performance). Products are not reviewed under LEED. LEED credit requirements cover the performance of materials in aggregate, not the performance of individual products or brands. For more information on LEED, visit www.usgbc.org/contact

Burmatex Ltd
Victoria Mills, The Green
Ossett, West Yorkshire
WF5 0AN
United Kingdom

T +44 (0) 1924 262 525
F +44 (0) 1924 280 033
UK email: projects@burmatex.co.uk
International email: international@burmatex.co.uk
www.burmatex.co.uk

Burmatex reserves the right to improve the specification of all products without prior notification. E&OE
Burmatex carpets and carpet tiles should be installed and used in full accordance with instructions at www.burmatex.co.uk and recognised trade standards.
Orders are subject to Burmatex terms and conditions of sale. See: www.burmatex.co.uk

LRV values for **balance echo**

Product code tiles	Product code planks	Product colour name	CIE Y	CIE L
21001	22001	black	2.34	17.19