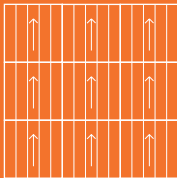
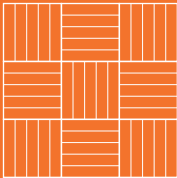


Workspace Loop

20 Colourways



BROADLOOM DESIGN



TESSELLATED DESIGN



BREEAM® 'A+' Rated



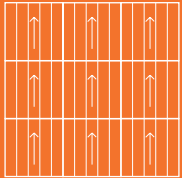
AVAILABLE
FROM STOCK

Workspace Loop

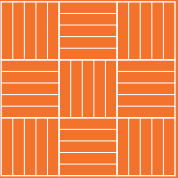
20 Colourways



- Suitable for use with computers
- Heavy Contract Class 33
100% Solution Dyed Nylon
- Toccarre
20 Colourways
- 10 year
Warranty
- 580 gsm
Pile Yarn Weight
- 100% Envirobase
- minimum of 75%
recycled material



BROADLOOM DESIGN



TESSELLATED DESIGN



BREEAM® 'A+' Rated



MADE IN BRITAIN

AVAILABLE
FROM STOCK

Workspace Loop





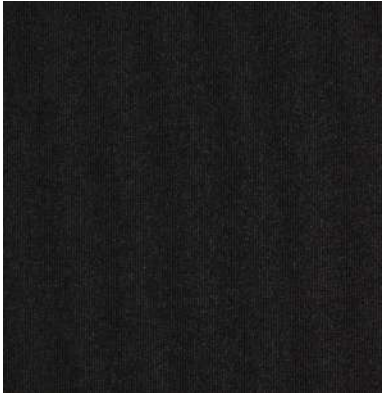
Workspace Loop



Style	Tufted Loop Pile Tile 1/10” gauge
Yarn Construction	100% Solution Dyed Nylon
Pile Yarn Weight	580 gsm
Pile Height	3mm
Total Weight	4360 gsm
Pile Density	172,000 tufts per m2
Total Thickness	6mm
Backing	100% Envirobase - minimum of 75% recycled material
Additional Backing	100% Komfort Bac available on request
Dimensions	50cm x 50cm
Wear Classification	Heavy Contract Class 33
Luxury Class	LC1
Anti-static	<2Kv body voltage. Suitable for use with computers.
Colour Fastness	To Light (BO2) 6 Wet Rubbing (BS1006:B01) 4 - 5 Dry Rubbing (BS1006:X12) 4 - 5 Shampoo (BS1006:UK-TB) 4 - 5
Flammability	Floorcoverings tested to BS4790 Low Radius of Char Euroclass Flammability Bfl-s1 (BS EN 13501)
Castor Chair Test	BS EN 985 r value 2.9 Suitable for continuous use
Warranty	10 Years
VOC Content	E1 in relation to EN 14041:2004
Environmental Status	Breeam® ‘A+’ Rated



Workspace Loop



Onyx
(LRV - Y2.47)



Apple
(LRV - Y21.82)



Sandstone
(LRV - Y17.28)



Ruby
(LRV - 5.35)



Rose
(LRV - Y6.36)



Magenta Rock
(LRV - Y4.42)



Lavender
(LRV - Y8.20)



Blueberry
(LRV - Y8.61)



Moorland
(LRV - Y10.05)



Sepia
(LRV - Y7.20)



Charcoal
(LRV - 6.36)



Graphite
(LRV - 5.51)



Platinum
(LRV - Y8.62)



Silver
(LRV - Y13.24)



Midnight
(LRV - Y4.17)



Indigo
(LRV - Y4.37)



Blue Yonder
(LRV - Y4.05)



Blue Moon
(LRV - Y7.68)



Kingfisher
(LRV - Y10.12)



Pampas
(LRV - Y10.13)

INSTALLATION

Sub floors should be clean, dry and flat and prepared in accordance with BS5325. Timber floors should be covered with plywood or other appropriate sheet materials. For tiles use F Ball tackifier F41 or Laybond 79. Tiles may be laid tessellated or broadloom. Tiles should be allowed to condition for a minimum of 24 hours at the expected temperature and humidity prevailing when the building is in use. Further installation information is available from the Paragon Sales Office.

COLOUR

For technical reasons, as with all textile materials, it may not be possible to colour match from different batches. Orders requiring colour match should be placed at the same time. Production may therefore show variations to the sample card.

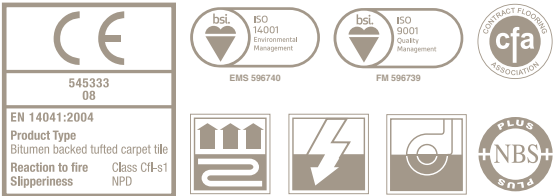
MAINTENANCE

It is recommended that a maintenance schedule be initiated from the date of installation to achieve maximum life expectancy of the product. Regular vacuum cleaning with a twin motored upright vacuum cleaner is essential. All spillages and stains should be attended to immediately. For detailed information, please consult the Paragon cleaning and maintenance guide. It is imperative that all internal carpets are well protected from outside soiling and moisture by the use of barrier matting such as MatWorks, also available from Paragon.



Farfield Park
Manvers
Wath-upon-Dearne
Rotherham, S63 5DB

T. +44 (0) 1709 763 839
F. +44 (0) 1709 763 813
E. sales@paragon-carpets.co.uk
W. www.paragon-carpets.co.uk



Experience Carpet Tiles



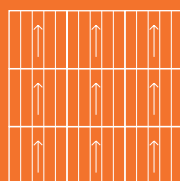
Workspace Loop

20 Colourways

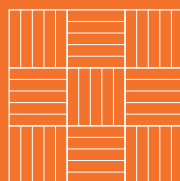
A Division of National Floorcoverings Ltd.
Farfield Park, Manvers, Wath-upon-Deane, Rotherham, S63 5DB T. +44(0) 1709
763839 Samples Department: +44(0) 1709 763805.
Order Free Samples Online E. samples@paragon-carpets.co.uk
www.paragon-carpets.co.uk | www.mat-works.co.uk



i colour wheel www.paragon-app.com



BROADLOOM DESIGN



TESSELLATED DESIGN



BREEAM® 'A+' Rated



AVAILABLE
FROM STOCK



Download our free apps NOW

Search Paragon Carpets

